

Talco Fire Systems

Residential & Commercial Packaged Fire Pump Specialists

Portland, Oregon

LSF-300C

Compact Residential Package

50GPM @ 50PSI

System Specifications

Motor

- 3 horsepower electric
- 230 Volt, 13 Amp
- Single Phase
- 3450 RPM

Pump

- 316 series stainless steel volute
- Stainless steel impeller
- 1½" Suction
- 1¼" Discharge
- 125 PSI Max Working Pressure

Discharge Manifold

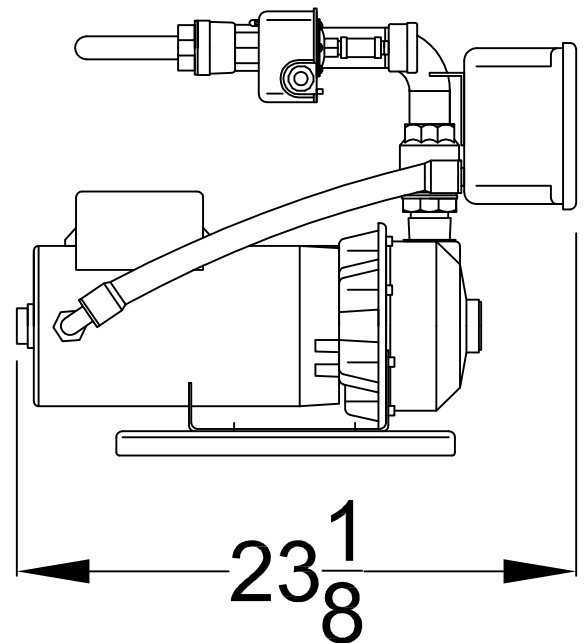
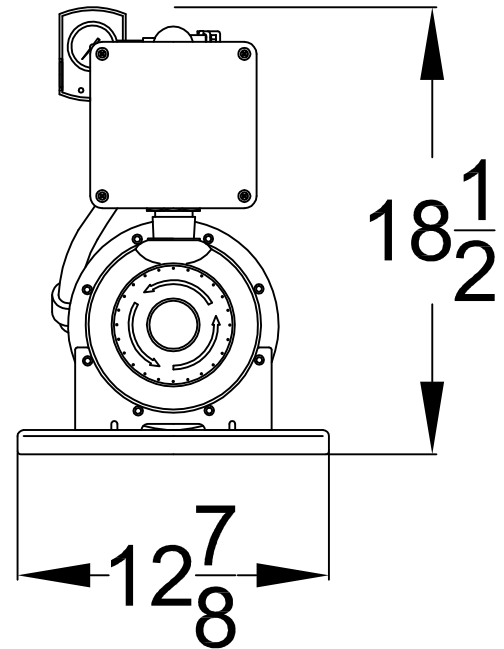
- Check Valve
- Zero to 100 PSI pressure gauge
- 40/60 pressure switch
- Isolation ball valve

Controls

- 230 Volt
- Minimum run timer
- Pressure switch operated contactor
- HOA toggle switch (Hand, Off, Auto)

Dimensions (approximate)

- 23⅛" Length
- 18½" Height
- 12⅞" Width
- 81 pounds



Performance

Performance values based on multiple pump tests. Not for certification purposes.

GPM	0	25	30	35	40	45	50	55
PSI	59	57	55	54	53	51	50	49