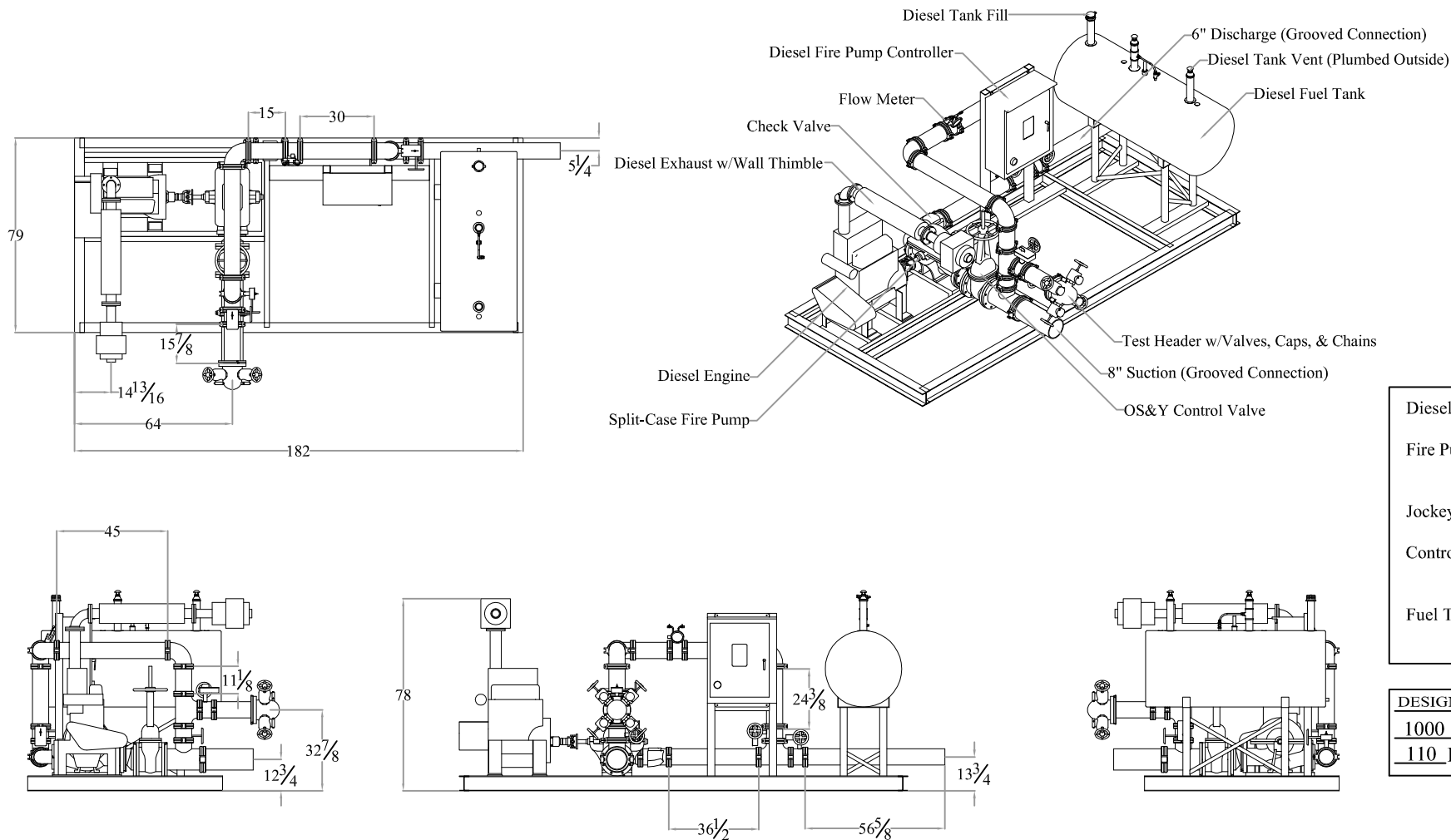


Talco Fire Systems

Residential & Commercial Packaged Fire Pump Specialists

Portland, Oregon

NFPA-20 Packaged Fire Pump System



- | | |
|----------------|---|
| Diesel Engine: | -Clarke JU4H-UF58 |
| Fire Pump: | -Aurora 5-481-15
6" Suction 5" Discharge |
| Jockey Pump: | -Goulds SVBK |
| Controls: | -Metron FD4
Diesel Controller |
| Fuel Tank: | -165 gal. Double Wall |

DESIGN CONDITIONS	
1000	GPM @ 85 PSI
110	HP 120 V 1 Phase